



ELEVATE YOUR BRAND

Light Tape® lamps will change the way you think about linear accent lighting, an illuminating medium like no other. The applications are endless one can create with Light Tape®. It is possible to achieve a look that was once was impossible with LEDs or other light sources. Light Tape can be delivered as a finished part, ready for plug and play assembly, or in long continuous rolls for customizing your next project.

Brand Experience



Why do you need Light Tape? We'll tell you!

EASY TO INSTALL, JUST PEEL AND STICK

Complete your installation in under an hour. Roll out Light Tape, stick it on with double sided adhesive, and plug it in. It really is that easy.

CUSTOMIZE IT ON SITE

Unsure about your final sizes? Lengths arrive on site too long? No need to fret! You can cut with scissors and use our end seal tape to finish the end. Or you can order in roll format, which allows you to cut and connect on site for the perfect fit.

FORM FACTOR LIKE NO OTHER

Light Tape bends easily around turns, allowing for seamless illumination in runs up to 150 feet (45m). Not to mention, it's thin as a credit card and always cool to the touch. There's nothing else in the world like it.

COLORS TO MATCH YOUR BRAND

With our wide color range, rest assured there is something that will capture your brand's essence. If you don't see something that works for you, we can work with you to closely match your branded color. Perfect for product launches, exhibition booths, and other branded events.

PRODUCT LAUNCHES



EVENTS



TRADE SHOW BOOTHS



ENTERTAINMENT

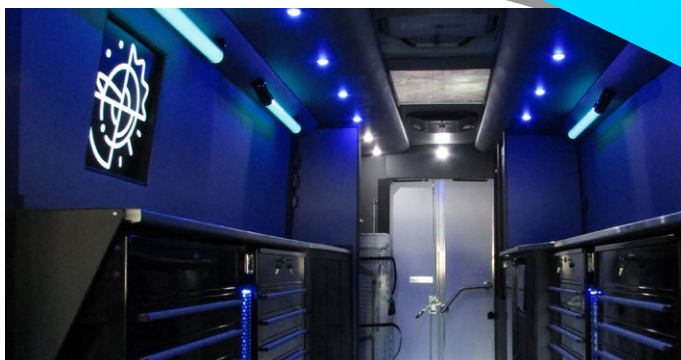


ENDLESS APPLICATIONS

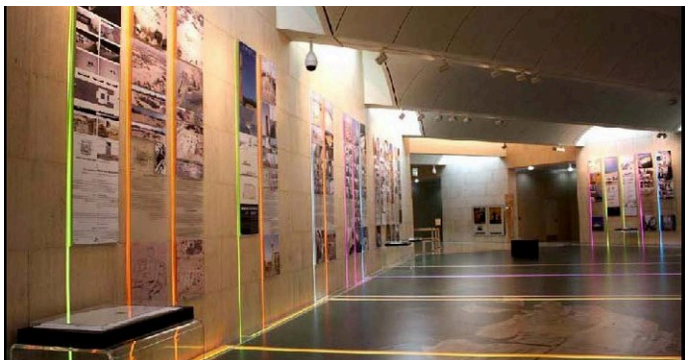
RETAIL ENVIRONMENT



MOBILE ENGAGEMENT



MUSEUM EXHIBITIONS




ART INSTALLATIONS



LightTape®

Bring your *ima gination* to light.

Proudly made in the USA. 



Even Illumination:

No hot or cold spots of any size. Single panels nearly a meter wide with the ability to overlap and cover any surface. No diffusion necessary, unlike LEDs.



Thin and Wide:

Thinner than a credit card, fits into any space. Easily transform an existing kitchen or bathroom into a backlit surface.



Custom-cut Shapes

Illuminate any custom shape, even holes are not a problem. Send us a file and we can laser cut Light Tape® to any dimension.



Surfaces Can Go Directly On Top

Heavy load capable, vibration and impact resistant. Place your solid surface directly over the Light Tape® without any buffer materials.



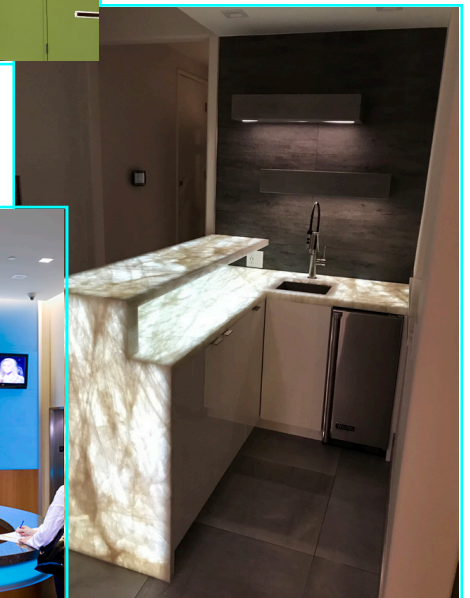
No Heat Problems

Light Tape® produces zero heat and is cool to touch. Light Tape® can also operate in extreme temperature conditions.



Easy Installation

Comes rolled up in a box, extremely light weight, just unroll it and place your solid surface on top. Illuminate a 20 foot bar with one Light Tape® panel and a connection.



LightTape® lamps set a new standard in EL.

Compared to alternative Electroluminescent technologies, no one comes close to our quality or performance.

We start by employing only the best materials to deliver amazing performance. We have a unique manufacturing process, a departure from traditional batch silk screening. Would you want your light made on the same machine as a t-shirt printer? We don't either, but that is how most alternate EL lamps are made.

AMERICAN MADE

Light Tape® is manufactured in the United States under strict quality control standards. Our proprietary manufacturing methods create an electroluminescent light source unlike any other in the world.

BEST MATERIALS

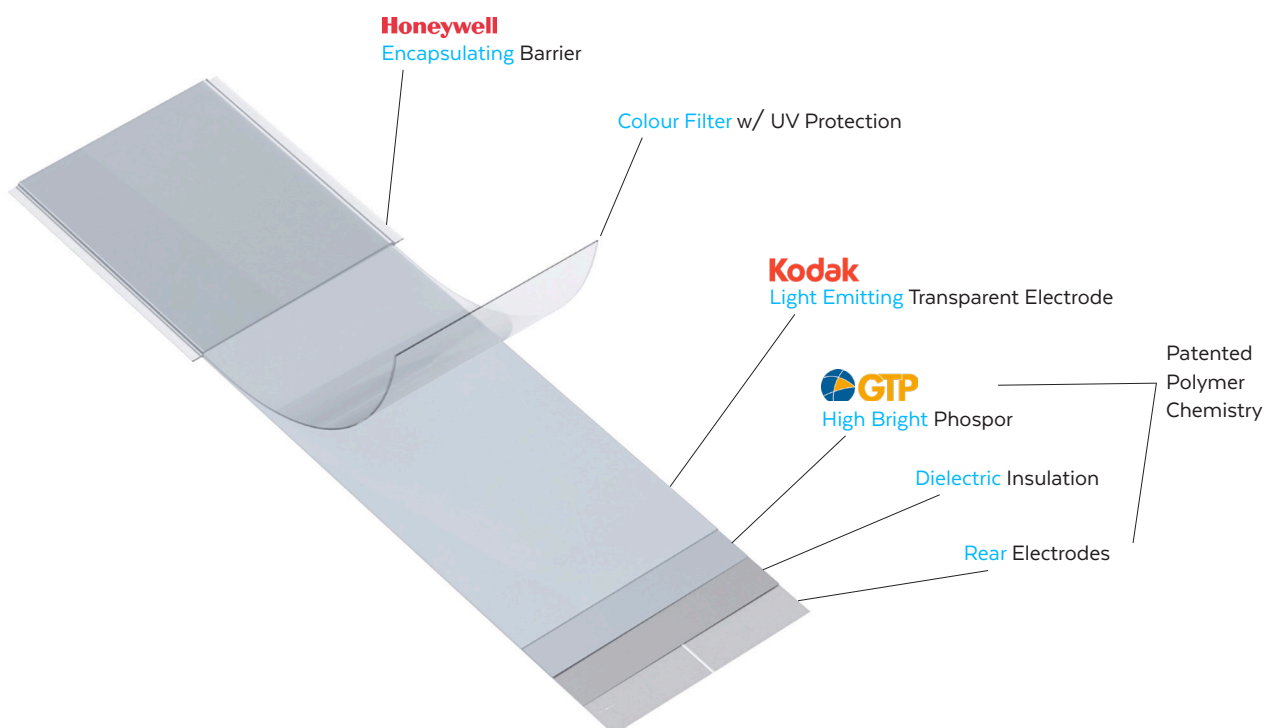
Only the best phosphors and conductive materials are used in Light Tape®. The combination produces a brighter, more durable light that uses less energy. Other EL producers use low grade phosphors and poor conductive materials resulting in nonuniformity of brightness and poor much shorter lifetimes.

NOVEL CHEMISTRY

Light Tape®'s one-of-a-kind chemistry is protected by numerous patents. Our material's layers are bonded at the chemical level, producing a brighter, more durable lighting source. Light Tape® is a true solid state system. Other EL producers simply glue the rear electrode to the material, which easily separates with flexing or temperature changes, leading to electrical failure.

UNPRECEDENTED LIFETIMES

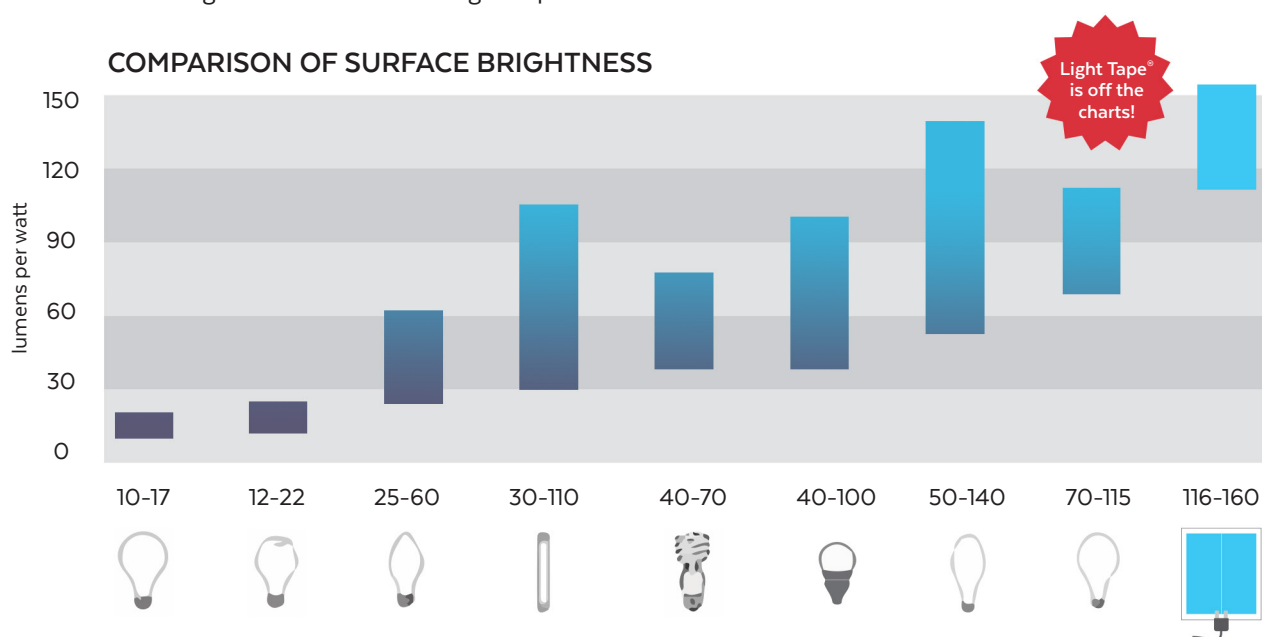
We are producing a lamp that is built to last, able to withstand the toughest applications.



Energy Consumption

Light Tape® is an incredibly efficient flat accent light, with a completely uniform illuminated surface.

Other light sources, like LEDs, directionally emit light with a great deal of the desired light either wasted or diffused in order to accomplish even illumination. When comparing the surface brightness of an accent light, there is nothing more efficient than Light Tape®.



LIGHT TAPE® VS. LED'S

	ACCENT LIGHTING				BACKLIGHTING	
	LIGHT TAPE	LED'S	LIGHT TAPE	LED'S	LIGHT TAPE	LED'S
ILLUMINATED WIDTH	1.27 cm	0.8 cm	2.54 cm	0.8 cm	100% Backlit	edge lit
AREA/LENGTH	1 linear meter	1 linear meter	1 linear meter	1 linear meter	1 square meter	1 square meter
ILLUMINATION SOURCE	100% phosphors	30 led's	100% phosphors	60 led's	100% phosphors	240 led's
CURRENT - AMPS	0.005	3	0.01	6	0.5	24
TOTAL WATTS	0.5	7.2	1.1	14.4	44	57.6
ILLUMINATION COVERAGE	100% uniform	2 cm gaps	100% uniform	1 cm gaps	100% uniform	60% uniform

HEIRARCHY OF TRADITIONAL MEASUREMENT OF BRIGHTNESS

BRIGHTNESS	IMPERIAL		METRIC	
	W/in ²	A/in ²	W/cm ²	A/cm ²
HIGH	0.028	0.342	0.0044	0.0530
AVERAGE	0.016	0.191	0.0025	0.0296
LOW	0.011	0.133	0.0016	0.020

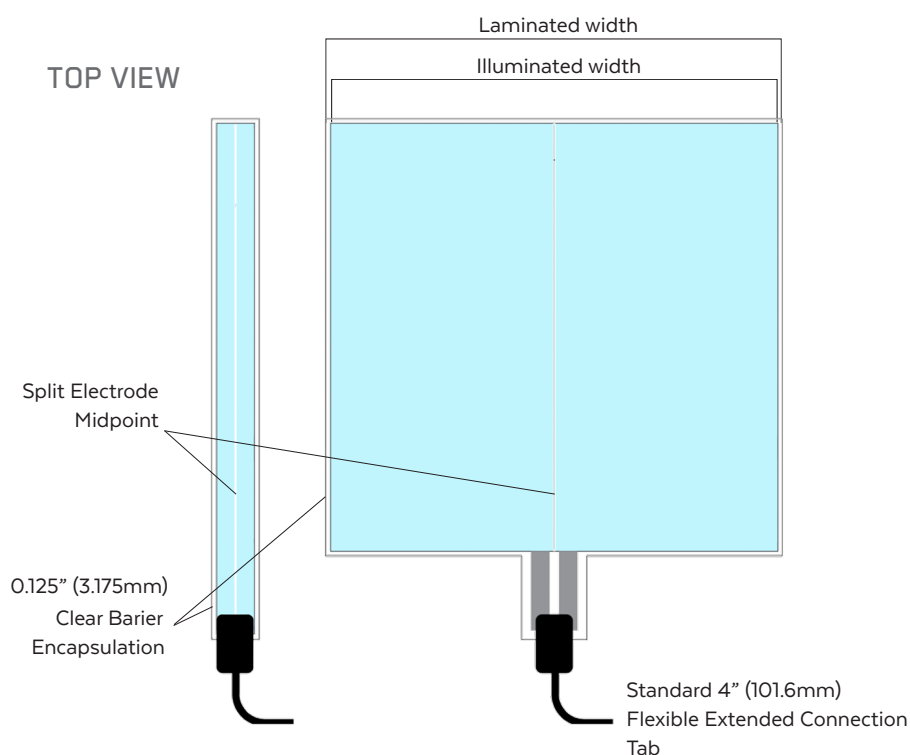
Light Tape® consumes power in a linear fashion. With every increase in area there is an equal increase in energy required to illuminate. Multiply the illuminated surface area by the multiples to get total watts and amps.

Total Watts = W x surface area
Total Amps = A x surface area

Light Tape® Standard Sizes

Item No.	Illuminated Width		Laminated Width (Interior)		Laminated Width (Exterior)	
LT-025	0.25"	6.35mm	0.75"	12.7mm	0.75"	19.05mm
LT-050	0.5"	12.7mm	0.75"	19.05mm	1"	25.4mm
LT-100	1"	25.4mm	1.25"	31.75mm	1.5"	38mm
LT-200	2"	50.8mm	2.25"	57.15mm	2.5"	63.5mm
LT-400	4"	101.6mm	4.25"	107.95mm	4.5"	114.3mm
LT-600	6"	152.4mm	6.25"	158.75mm	6.5"	165.1mm
LT-1200	12"	304.8mm	12.25"	311.15mm	12.5"	317.5mm
LT-3000	30"	762mm	30.25"	768.35mm	30.5"	774.7mm

Please note: Custom widths available to order



NOTE: the split electrode midpoint (SEMP) is a critical element of Light Tape®'s engineering that runs centered through the entire length.

WHEN ORDERING, PLEASE SPECIFY:

- Installation location - Interior (INT) or Exterior (EXT)
- Desired illuminated color
- Illuminated width item number
- What length for each Light Tape® lamp? (min order length of 25 ft / 7.62m required)
- Total number of lamps required
- Power Input - AC or DC? What input voltage?
- Flexible extension connection tabs for backlighting applications are standard at 4" long. This allows connector to be hidden. Please advise if longer lengths are required.

ADDITIONAL INFORMATION:

- Custom widths are possible to fit any dimensions. Light Tape® can be tiled together with no seams or gaps in illumination.
- Power input location (please specify short or long side of lamp).
- A basic top or front view drawing with dimensions is helpful to our engineering team to estimate materials needed.
- We will suggest best electrical configurations for your project based on site layout.

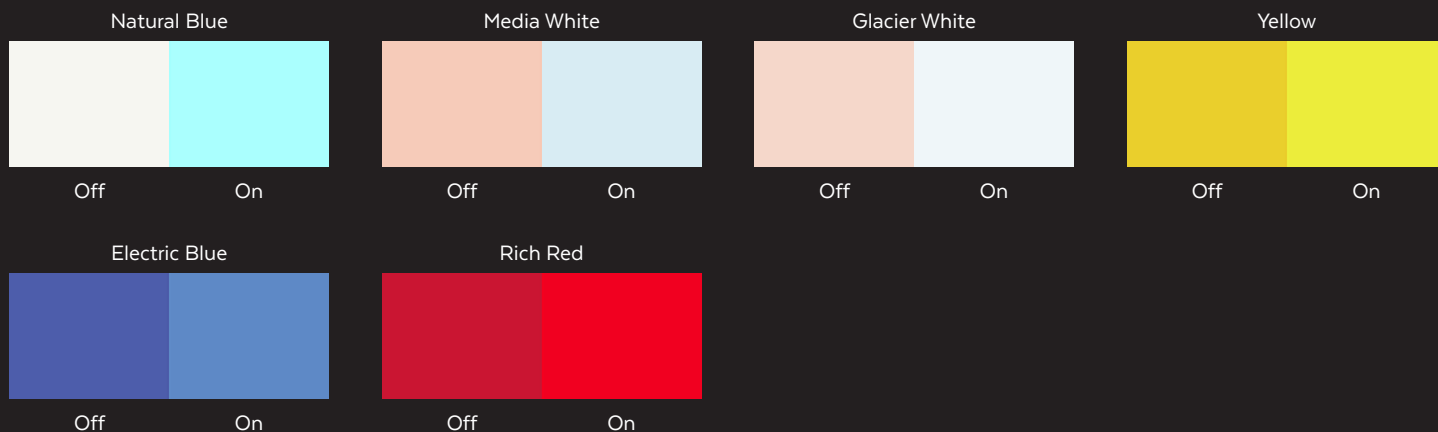
Light Tape® Color Options

Our base colors are the Classic Natural Blue and Extreme Blue-Green. These colors appear white when off and lightly colored when illuminated. We then add filters to produce alternative color options.

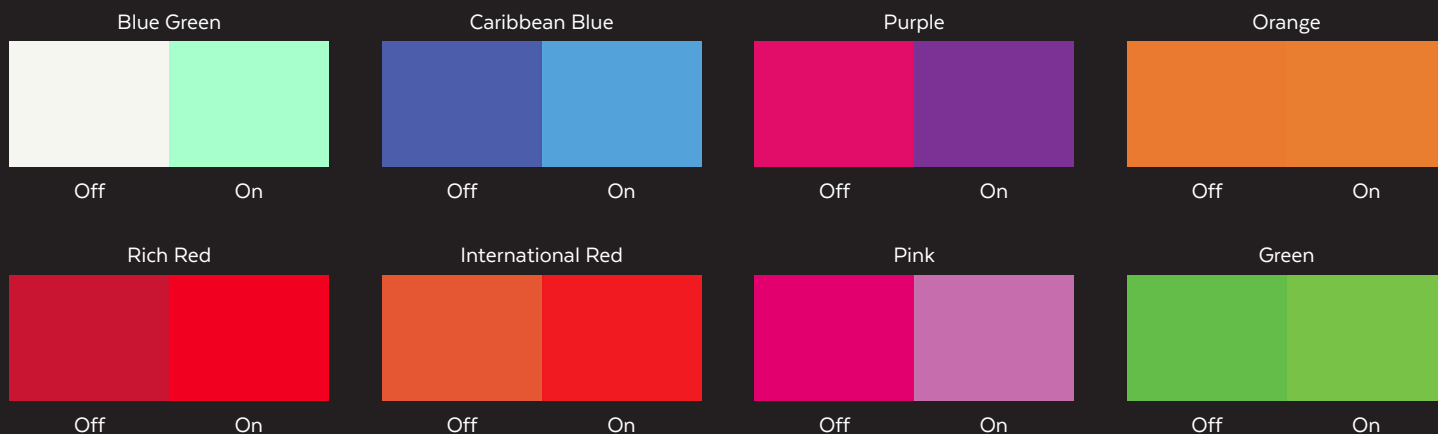
Our Media White and Glacier White colors are perfect for backlighting and applications requiring white, unfiltered light, these will appear lightly colored when switched off.

Our remaining range of colors will retain their vibrance when not illuminated so you don't lose the desired effect even when it's switched off, perfect for branding and advertising.

CLASSIC SERIES



EXTREME SERIES



NOTE: The colors in this guide are simulated and as such the final product may vary. If an exact color is required, we recommend seeing a physical sample of the lamp. Custom colors and widths are available, but may be subject to minimum order quantities, set-up fees, and approval testing.

Technical Specifications

Light Tape® Physical Specifications

Thickness (varies depending on color)	0.010 to 0.020 inches / 0.254 to 0.305 millimeters
Protective Encapsulation Seal	1/8" (3.18mm) on each side (+/- 1/16 inch, +/-0.159 cm)
Light Tape® Illumination Width	0.25" to 30" / 6.25mm to 762mm
Illumination Coverage	Infinite, can be tiled without a break in light

EELC Smart Driver™ Power Supplies

AC Power Supply Input Voltage Range	90V - 260V AC
AC Power Supply Output Voltage (dimmable)	0 - 350V AC
AC Power Supply Control	Dimming, 0 - 10V DC and DMX 512 Capable
AC Power Supply Output Cable	22AWG, 105°C, 600V, VW-1
DC Power Supply Input Voltage Range	3V - 24V DC (12V DC Standard)
DC Power Supply Output Voltage	260V AC
Light Tape® Operating Frequency	800Hz, ± 300Hz (Dependant on tuning)
Phase Angle	78° Leading Edge

Light Tape® System

Light Tape® Load	Capacitive Load
Light Tape® Power consumption	16W - 44W per m ² based on low to high brightness dimming (Average: .023W per in ² / 0.0035W per cm ²)
Light Tape® Power consumption (Per Linear Meter at 25.4 mm wide)	0.4W - 1.1W (Dependant on tuning)
Light Tape® Current Consumption*	0.19mA per in ² / 0.0296mA per cm ² 27.36mA per ft ² / 296mA per m ²

Light Tape® Performance

Rated Lifetime**	40,000+ hours
Rated Lifetime - Years**	20+ years
Average Brightness	125 cd/m ²
Brightness Range	0 - 200 cd/m ²
Uniformity	Completely Uniform, max ± 1 cd/m ² , independant of total surface area
Operating Temperature - Ambient	-22°F +122°F / -30°C +50°C
Heat Gain During Operation	Does not produce heat during operation
Compressive Strength - Ground Pressure	500psi + (more depending on mounting system)
Impact Strength - Izod (73F)	6.5 ft-lbs/in ²
Flexural Strength	700 > 15,000 cycles ASTM D2176
Flexibility - Bend Radius	Contours around 6mm ø curve
Punctureable	Will continue to illuminate even if punctured.
Maximum Processing Temperature	350°F / 177°C (depending on residence time)
Product Warranty***	3-5 year limited warranty for Light Tape Lamps, 1 Year warranty for power supplies

Health and Safety

Safety Features	Overload and short circuit protection. UL listed.
UL Certifications	File number E319670, 2006/95/EC
CE Certifications	EC-Attestation of conformity - No. 0704 63147 001
AS/NZS Certifications	Certificate of suitability - IEC 61347.2.13:2013, 61347.1:2016
Low Voltage Directive	Compliant
Environmental Compliance	ROHS and WEEE Directive
EMC Emissions Compliant	EN55015 (CISPR15) Radiated and Conducted Emission
Flame Resistance	UL 94VTM-O
International Protection Marking	IP67, EN60529

*Data recorded at average brightness, with AC Driver output of 250 Volts and 850 Hertz.

** based on 5 hr usage per day, average brightness, not operating when exposed to direct sunlight

*** Please refer to our Product Warranty Policy for additional details.

WWW.LIGHTTAPE.COM