



## Product Guide **2026**





# Index

What is Light Tape? .....	2
Help Prevent Future Falls .....	3
Refurbishing your Venue? .....	4
Illuminated Stair Nosing .....	5
Illuminated Stair Nosing Profiles .....	6
Aluminum Profile Options .....	7
Illuminated Stair Nosing Portfolio .....	8
Direct View Illumination .....	9
Aisle Lighting .....	10
Accent Lighting .....	11
Custom Signage .....	12
Custom Signage Portfolio .....	13
Accessory Options .....	14-15

# What is Light Tape®?

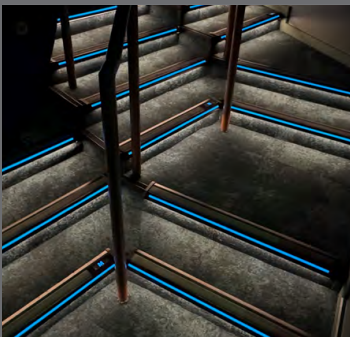
The magic inside StepGuard®  
**that makes us unique in the industry.**

For more than two decades, we've manufactured our proprietary Light Tape® electroluminescent lamps in the United States, delivering unmatched reliability in the world's toughest environments. If you want to reduce falls and improve safety, nothing outperforms Light Tape®. Studies show that clearly marking step edges and hazards with contrasting light provides the strongest visual cues for safe movement.

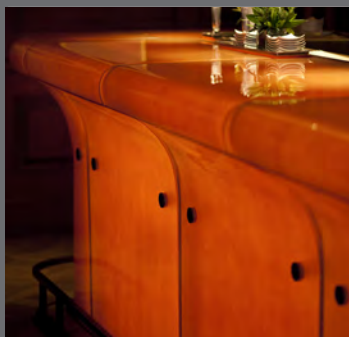
Unlike LEDs, which create harsh and distracting glare, Light Tape® produces a soft, uniform glow that boosts visibility and helps people move with confidence. Our StepGuard™ systems are engineered to pair perfectly with Light Tape®, creating the only solution where the light source and profile are designed and built together for seamless, high-performance illumination.

At the core is our non-glare, crisp Light Tape® technology, refined through decades of innovation across multiple industries. The result is a lighting system that performs flawlessly and looks exceptional in any environment.

## We have Experience



- Over 10,000 Business class seats flying above the earth
- **Miles of tunnel egress for Suez Canal, South Korea Subway, Chilean Tunnels, Washington DC Capital** and in place over a decade
- **Mixed Reality helicopter / gunner trainers for the USAF**
- Illuminated over a 1,000 bespoke kitchen counters, islands and bars
- **Super Bowl halftime with Prince, Movies like Tron, 100s of branding events**
- Supersized billboards on Sunset Strip, Times Square, Trains, Busses



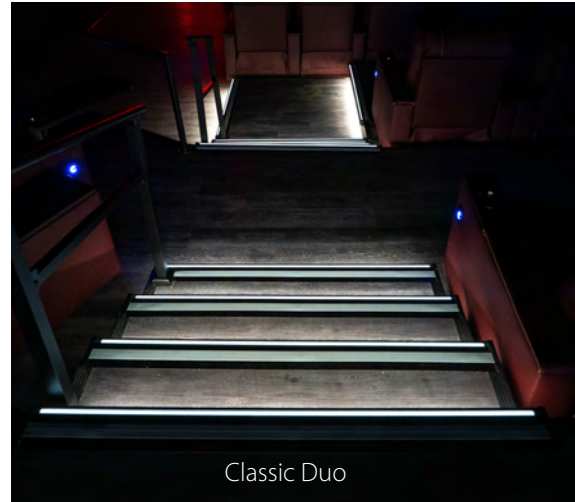
# StepGuard® with Light Tape® - Safety you can See

## A step in the right direction

Every year, thousands are injured in stairway falls caused by poor step-edge visibility. More light isn't the answer; the right light is.

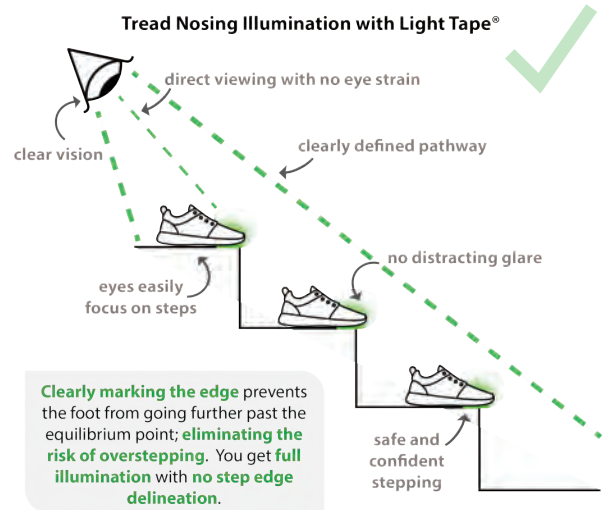
Research shows that a high-contrast edge marker placed flush with the step greatly improves visibility and foot placement, reducing slips, trips, and costly liability.

StepGuard™ with Light Tape® provides that solution. Its patented, non-glare illumination creates a crisp, continuous line of light that clearly defines each step. Paired with our advanced stair nosing profiles, it delivers a complete safety system that enhances navigation and elevates any space.

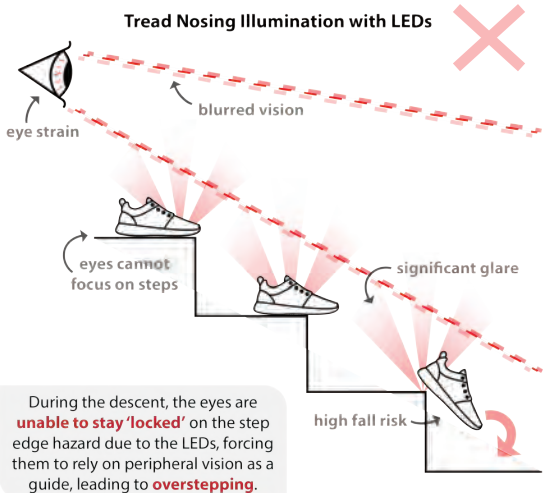


### Why StepGuard® Works

- High Contrast for Maximum Safety**  
 Studies show that keeping at least 50% contrast at the stair edge increases heel clearance, improves gait, and greatly reduces fall risk. Nothing performs or looks better in low light than Light Tape®.
- Illuminated Edge for Confident Steps**  
 StepGuard™ delivers a precise line of light exactly where it's needed at the step edge. Positioned flush with the profile, it prevents overstepping on the way down and understepping on the way up, helping users move naturally and safely.
- Direct-View Safe Lighting**  
 Unlike harsh, glaring LEDs, StepGuard's electroluminescent Light Tape® is made for direct viewing. With zero glare and even illumination, users can clearly see each step and walk with confidence.



### Why LEDs fall short and Light Tape® Leads the Way



- Glare and Temporary Blindness**  
 Direct-view LEDs can overwhelm the eyes, causing momentary flash blindness and loss of step visibility, especially in dark environments. This is even more dangerous for middle-aged and older users, who face the highest fall risk.
- Poor Foot Placement**  
 Harsh LED hotspots distract the eye and pull focus away from the step edge. Instead of guiding foot placement, they force users to rely on peripheral vision and increase the chance of missteps.
- The Light Tape® Advantage**  
 Light Tape® provides a uniform, non-glare line of light that's safe for direct viewing. Smooth from end to end, it enhances visibility without distraction, offering a lighting solution designed for human vision, not just illumination.

# Refurbishing your Venue? Don't Overlook the Lighting.

Still upgrading seats, projectors, and sound while relying on the same LED step lights from the early 2000s? **For the cost of a few premium seats, you can transform your cinema with Light Tape®.**

Our patented electroluminescent lamps elevate the entire atmosphere while improving safety, helping guests move with ease and confidence. Paired with StepGuard™ profiles, you get a complete system that combines style, safety, and innovation in one seamless solution.

Best of all, Light Tape® is proudly manufactured in Virginia, supporting American craftsmanship for more than two decades.



## GREEN SYSTEM

Light Tape® consumes 40% of the power of LEDs. As low as ¼ watt a meter, and never gets hot. Extremely efficient in producing light.



## FULLY DIMMABLE

Adjust brightness evenly all the way to off without a flicker. Controllable by 0 – 10 vdc, DALI and DMX dimming.



## UNMATCHED DURABILITY

Light Tape is the only true solid-state lamp. All layers are chemically bonded together like paint and protected inside an aluminum profile with integrated end caps.



## NO GLARE ON SCREEN

Light Tape is the perfect accent light, bright on the surface. Clean and crisp like a laser. Light where you want, not the entire venue.



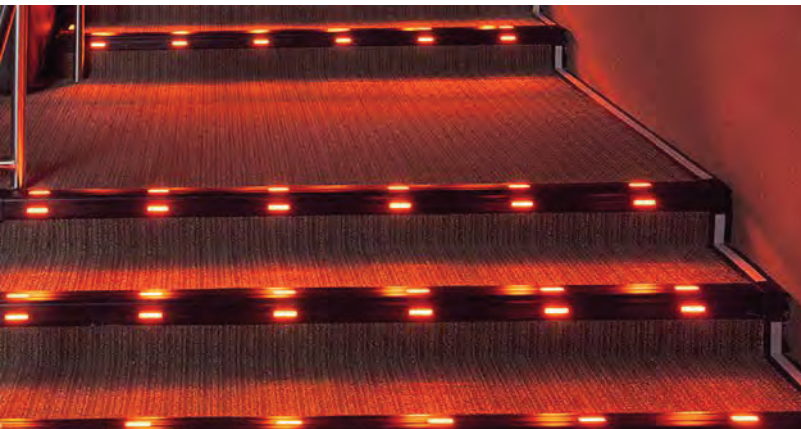
## NO SPILLS FEARS

StepGuard is sealed to an industry high IP65 rating. Preventing liquids from entering the system, keeping everything dry inside.

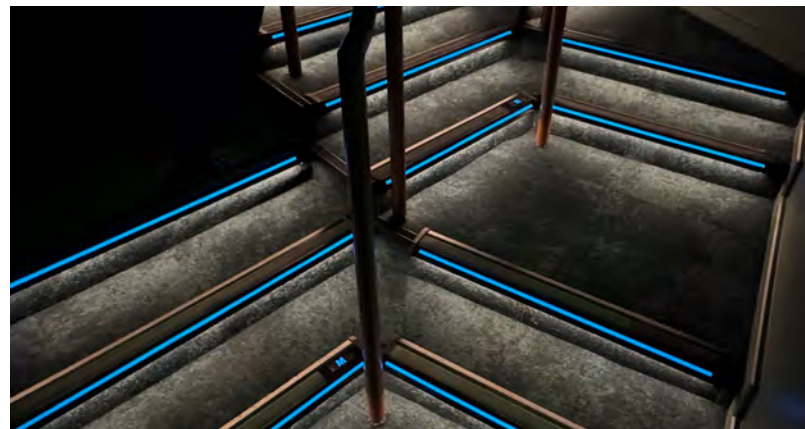


## RAPID INSTALLATION

Wiring is easy with one power supply, no voltage drops or polarity. Screw it, don't glue it down. Avoid all the mess and missing caps.



**X Hazy and Bright LEDs..Really, Again?**



**✓ Light Tape®.. Clean, no glare and extremely reliable.**

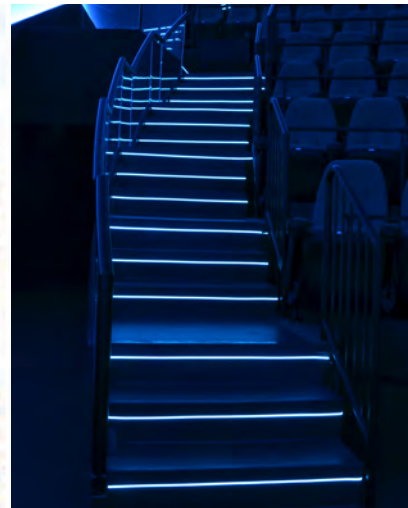
# StepGuard™ Wayfinding Solutions

## Illuminated Stair Nosing

We manufacture a range of aluminum profiles with multiple lighting configurations. Our most popular designs use Light Tape® on the stair nosing to clearly **define the edge** and **greatly reduce** the risk of **overstepping**.

The Climax Duo provides a crisp top-edge light plus an angled downlight for tread visibility, while the Max system—designed for IMAX—creates a fully immersive experience. We also offer angled nose lighting that stays hidden from view when seated, thanks to its precise viewing angle.

- StepGuard® Patented
- Life Safety downlight options
- Robust aluminum profile
- Fully dimmable with no flicker
- Cut anywhere
- Screw down with anchors, no mess
- No glare or light pollution
- 100% even illumination
- 40% the power of LEDs
- Integrated caps that don't get lost
- EPDM rubber anti-slip
- Pre-wired and ready to install

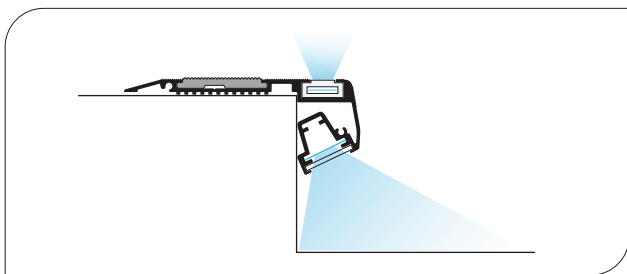


# Stair Nosing Lighting Profiles

We manufacture a family of aluminum profiles with a Light Tape® edge delineation and immersive options. Our LED downlight options exceed the toughest codes.

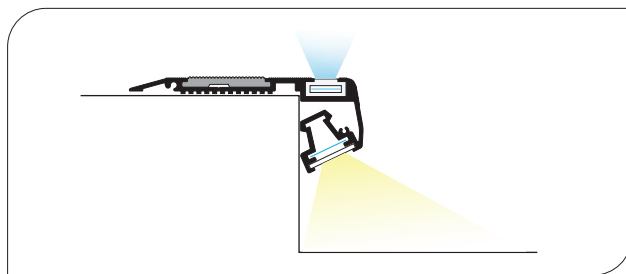
Following the best practices from numerous scientific studies to prevent falls. We designed our stair systems to ensure the perfect foot placement while navigating steps to prevent falls, especially in dark conditions.

## Climax DUO



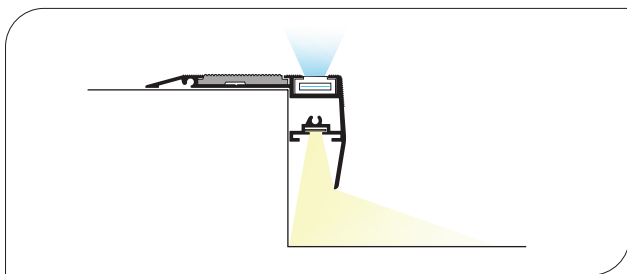
A blend of our two most popular designs, Classic and Max, this profile clearly marks both the leading edge and the step face for ideal foot placement. Its wider design and rear anchor point make it an excellent choice for retrofitting older steps.

## Climax DUO Stadium



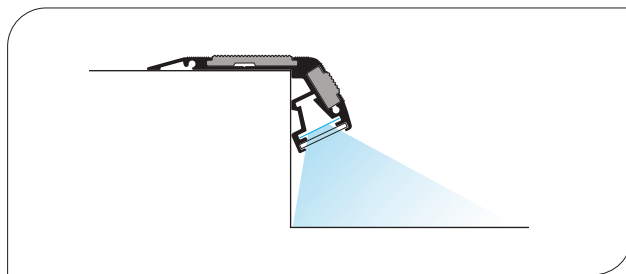
A step lighting product that incorporates LEDs on the bottom for downlighting, distinguishing it from the standard Climax Duo which relies entirely on Light Tape. Specifically designed for illuminating large areas that feature stadium seating.

## Classic Duo



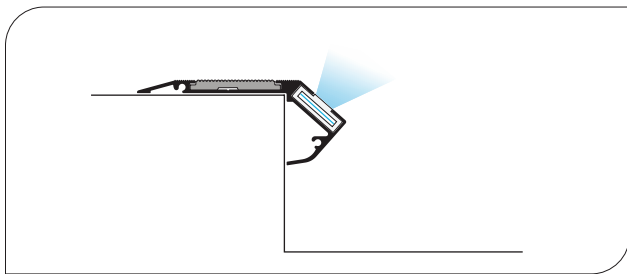
For extra brightness on the step while limiting cast light, remove the top light and increase the downlight with a high-bright LED. Our LEDs shine downward to illuminate the tread without sending light toward the screen.

## Max Immersive



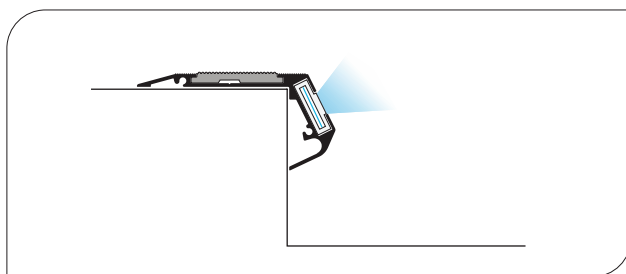
Designed for IMAX, it creates an immersive lighting environment with even illumination at the step base and optional top-edge delineation. Light stays off the screen and only illuminates the base of each step.

## SG30 degree



A single Light Tape lamp on the step nose at a 30-degree angle. It casts no light toward the screen and is easily seen when walking up or down the steps, but disappears when seated, preserving an immersive environment.

## SG45 degree

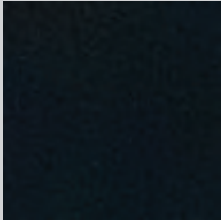


A single Light Tape lamp in the center of the step nose at a 45-degree angle. It is visible when standing but disappears when seated. This popular model offers a clean, modern look and greatly improves navigation.

# StepGuard™ Aluminum Profile Options

## Flat Paint Colors

Standard Color  
always in stock

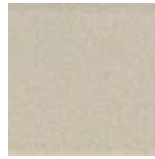


MATTE BLACK

Custom Colors  
require lead time



SMOOTH GOLD



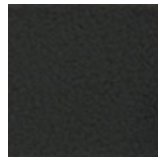
ALMOND



ALUMINUM NATURAL GREY



SAHARA SAND



GOLDEN BROWN



MATTE BROWN



PURE WHITE

## Wood Finish



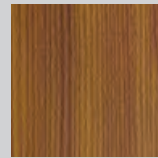
GUAYACAN



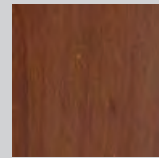
OAK



NUT



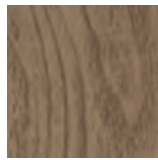
PINE



DARK NUT



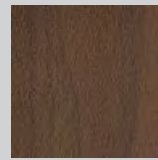
CHESTNUT



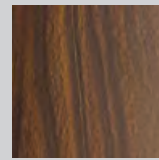
CEDAR



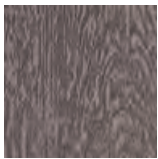
CHERRY



MAHOGANY



CILEGIO



PINK POUI



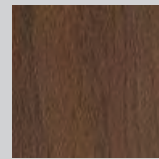
GREY MAYA



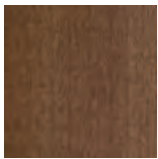
URAPAN



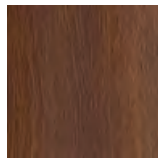
RUST



DARK WALNUT



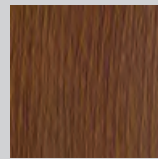
DARK BROWN



DARK GUAYACAN



DARK PINE



DARK OAK



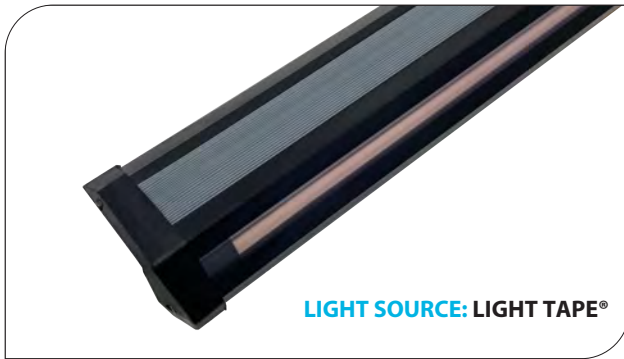
WALNUT

# Illuminated Stair Nosing

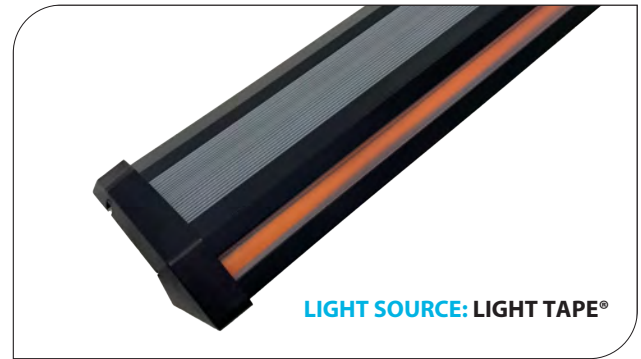
## Featured Models

### Single Illumination

**SG45**



**SG30**



### Single/Dual Illumination

**SG Classic Duo**



**SG Max Immersive**



**SG Climax Duo**



**SG Climax Duo Stadium**



# StepGuard™ Aisle Lighting Solutions

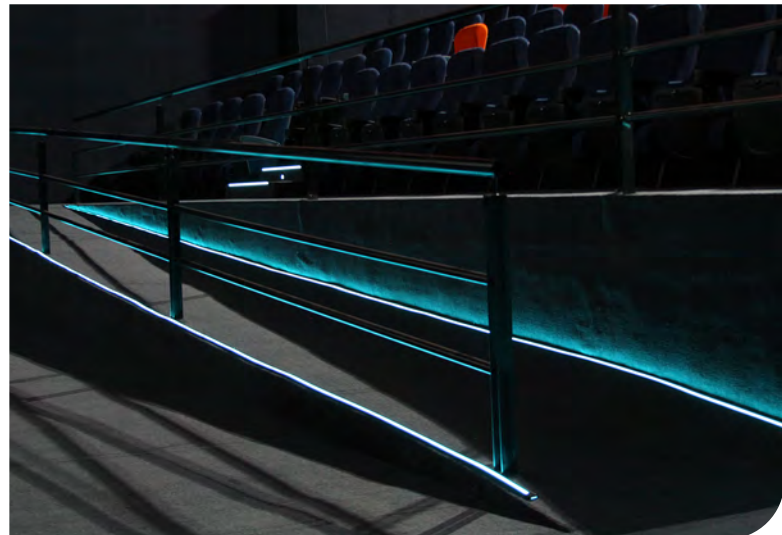
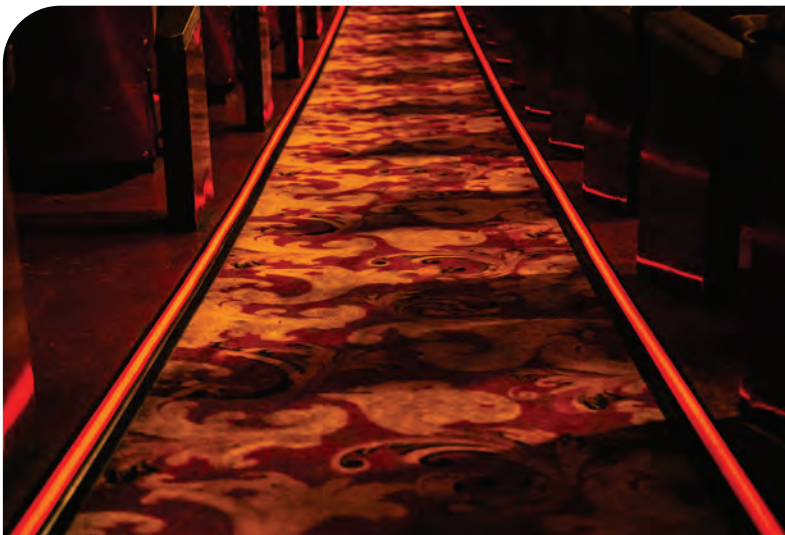
## Direct View Illumination

Our aisle systems light sloping floors and entranceways with crisp, continuous illumination. Runs up to 75 feet on a single connection, fully dimmable for complete control.

### Install in minutes!

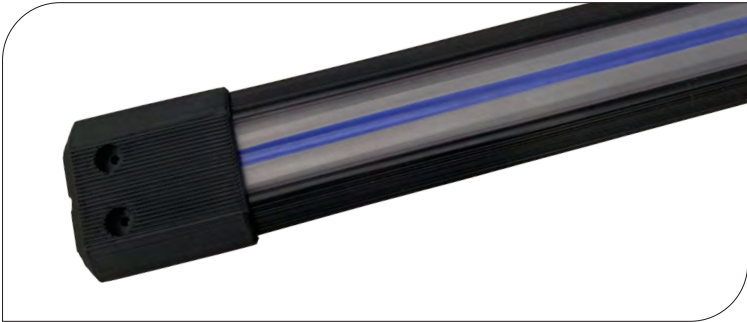
Screw down the base, roll in the Light Tape® insert, and you're done. One power supply drives hundreds of feet of lighting, delivering the most efficient, low-maintenance solution available.

- **Patented StepGuard® Technology** – built tough with premium aluminum and ABS for lasting performance
- **Made to Fit** – cut to any length for a perfect, seamless look
- **Quick & Clean Installation** – just screw down with anchors, no mess or hassle
- **Comfortable Glow** – no glare, no light pollution, just beautiful illumination
- **Brilliant & Even Lighting** – consistent brightness from end to end
- **Protected for Durability** – Light Tape® safely sealed inside a clear channel to protect against liquids.
- **Ready to Go** – complete with end and 90 degree caps with everything you need to install
- **Customizable** – multiple color options, end caps and corner caps for wiring, up to 75' with a single connection



# StepGuard™ Aisle & Accent Direct View Illumination

## Aisle Lighting Solutions

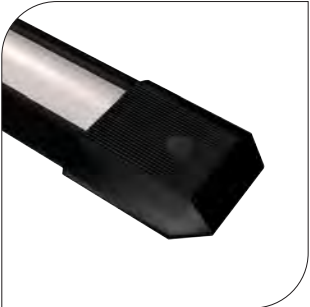


A two-part solution with Light Tape pre-inserted in protective inserts up to 75 feet. Simply install the mounting base to hold the luminaire, making installation quick and easy.



## End Caps

- Supplied with the order based on the specifications of your venue



Standard

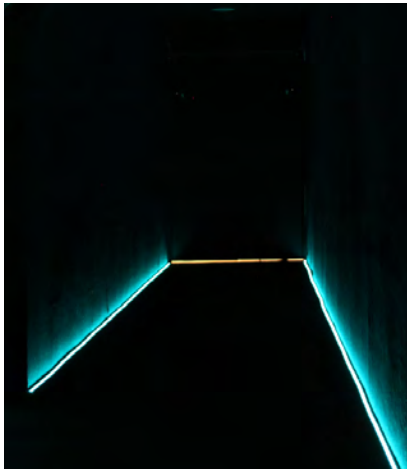
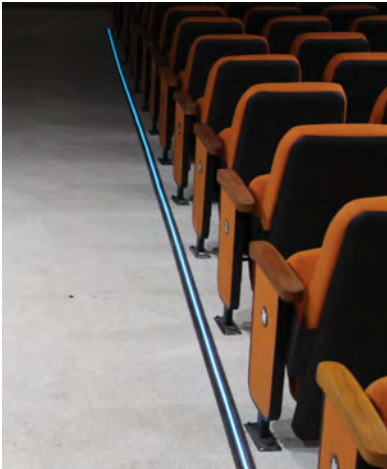
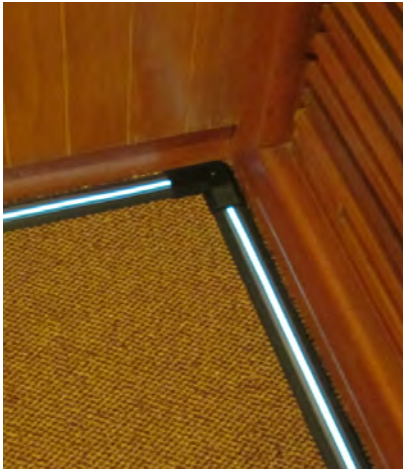


90 degree



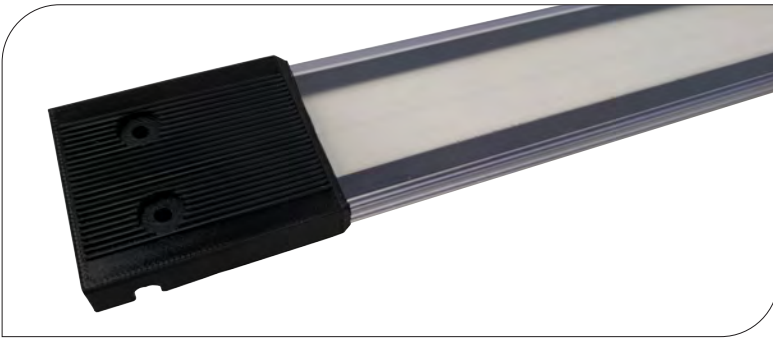
Adjustable

Our Aisle System arrives connected and sealed. The continuous insert with Light Tape is then snapped into the base channel and sealed at the far end when flat, making it waterproof. Takes a matter of minutes to roll out 75 feet of lighting.



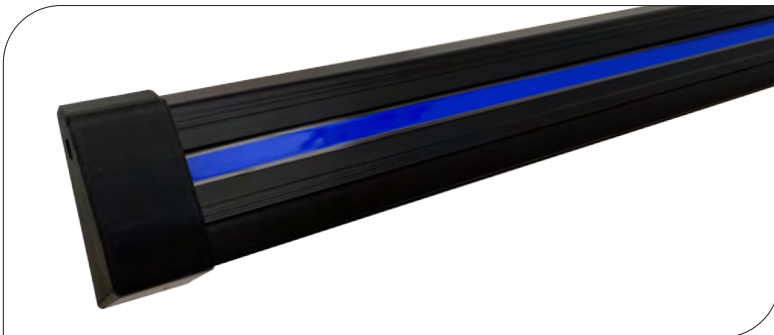
# StepGuard™ Aisle & Accent Direct View Illumination

## Ambiance

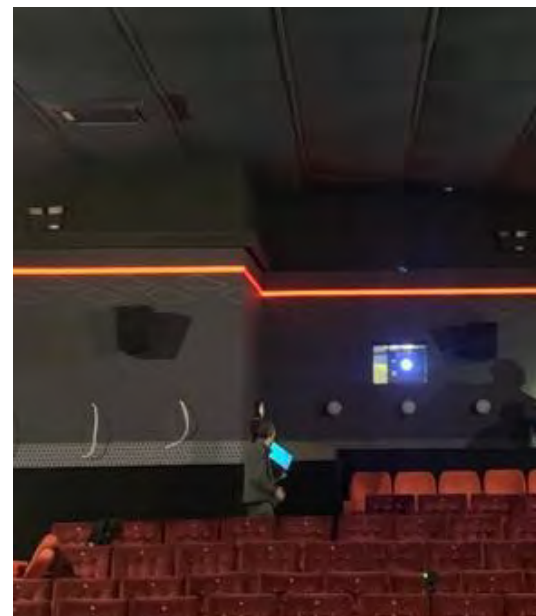


Two part patented Snap-N-Light system. Long aluminum base profiles with a snap lens. Designed for wall accent, runs up to 100 feet with one connection, available for 1" Light Tape®.

## WallGuide



Long aluminum profiles for entranceway walls that illuminate the floor while preventing unwanted uplighting. Tightly pitched LEDs provide even light with no hot or cold spot with a top light guide option.



# StepGuard™ Wayfinding Solutions

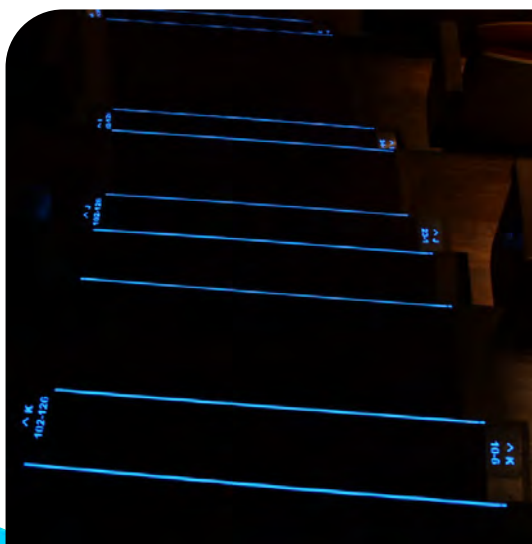
## Custom Signage

We offer illuminated row numbers as an optional add-on, that are integrated directly into our aluminum stair nosing, or mounted to your existing seats. The profile stays low, tough, and safe to walk on, even in high-traffic environments.

Our floor and wall systems use Light Tape® backlighting to highlight signage, from handicap sections to custom graphics. Each fixture can also include an LED downlight below the Light Tape® signage, providing clear seat numbers or entrance markers with just the right amount of light for safe navigation.

With StepGuard®, you get durability, energy efficiency, and a clean installation. And with the Cyclops—our newest wayfinding solution—you can combine branding and functionality into one.

- **StepGuard® Patented Technology** – engineered for safety and performance
- **Dual Lighting in One Fixture** – maximize versatility with two technologies built in
- **Custom Branding Options** – add illuminated logos and signage that stand out
- **Comfortable on the Eyes** – Light Tape® delivers smooth, readable illumination
- **No Glare, No Light Pollution** – only crisp, targeted lighting where you need it
- **100% Even Illumination** – consistent brightness from edge to edge
- **Slim, Lightweight Design** – low profile without compromising durability



# StepGuard™ Wayfinding Solutions

## Custom Signage

### Cyclops



Brilliantly illuminated signage on the top with a rotationally adjustable high bright LED module underneath for pinpoint down lighting, ideal for illuminating entrance ways or platforms, with messages along the way.

### Custom Signage



Light Tape® signage provides a striking, uniform glow that keeps your theater safe. This innovative solution delivers clear, reliable egress marking without distracting from the movie or ruining the dark, immersive cinema atmosphere.

## Row Numbering

### Integrated



Backlit row numbers facing up from the floor inside a fully sealed module to keep out spilled drinks. Designed to slide into the top of our aluminum step profiles.

### Surface-Mounted



Backlit row numbers facing up from the floor or out from the wall inside a fully sealed module to keep out spilled drinks. Designed to slide into a frame for floor or wall fixing.



Integrated Row Numbers



Custom Signage



Cyclops

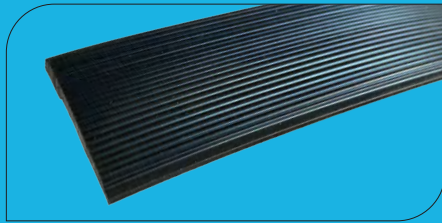


Surface Row Numbers

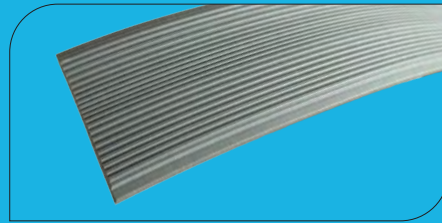
# StepGuard™ Antislip & Light Tape® Insert Options

## Antislip

### EPDM / PVC Top Antislip 2"

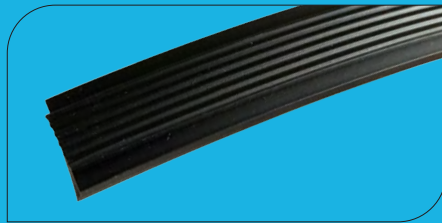


**EPDM BLACK**  
FOR ALL MODELS

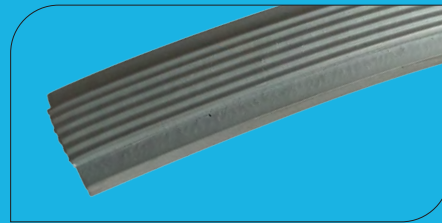


**PVC GREY**  
FOR ALL MODELS

### PVC Mini Front Nose Antislip



**EPDM BLACK**  
SGCLASSIC / MAX / CLIMAX



**PVC GREY**  
SGCLASSIC / MAX / CLIMAX

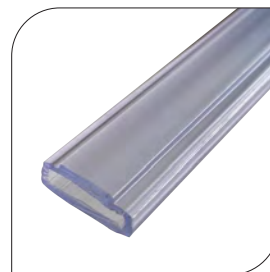
## Inserts

### Aisle Insert

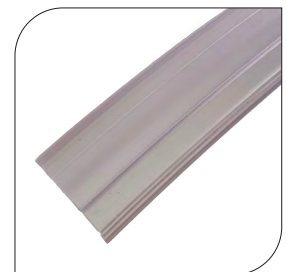


**FLEXIBLE INSERT**  
AISLE FL50

### Profile Inserts



**RIGID INSERT**  
SGCLASSIC / MAX / CLIMAX



**FLEXIBLE INSERT**  
SG45 / 30

# StepGuard™ End Cap Options

## Standard Caps



**ABS INJECTED WITH PHILLIPS SCREWS  
(SG 30 SHOWN)**

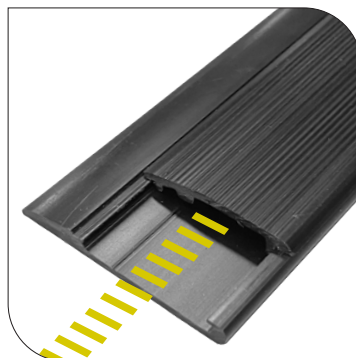
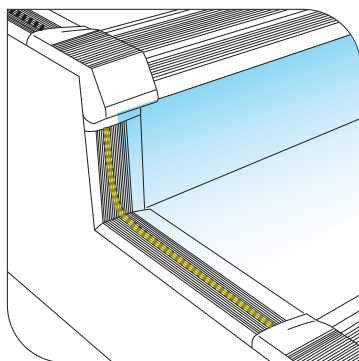
## Caps for Raceway System



**VULCANIZED RUBBER WITH PVC RACEWAY  
ONLY FOR SG45**

Designed to conceal surface wiring from step to step, eliminating tripping hazards and providing a sleek, contained look.

## Raceway System



Slidable capping makes installation simple and allows wiring to rest discretely inside.