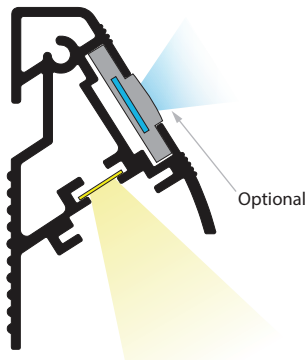


WallGuide™ Mini



Design Features

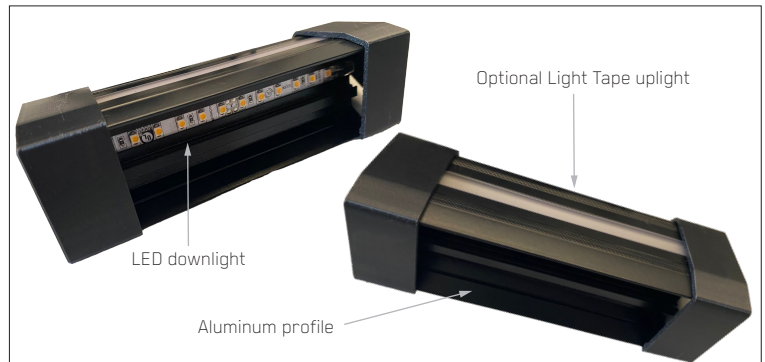
- Integrated Light Tape and LED lighting.
- Adjustable rotational downlight to set the preferred lighting angle.
- Durable aluminum profile with ABS end caps.
- 12V or 24V LED options for the bottom light.
- Electroluminescent Light Tape for the top light.
- Aluminum profile length +/- 3mm

SG-WG-MINI: Modular Unit

The WallGuide™ Mini enhances theater entrances by combining immersive design, sleek profiles, and safety. It delivers a highly visible yet cost-effective lighting solution that guides guests without distracting from the entertainment experience. Unlike the standard WallGuide™, the Mini arrives in small sections, perfect for pinpointing specific areas for illumination.

Using high-brightness LEDs, the WallGuide Mini effectively illuminates large transition areas with minimal hardware. Modules can be used individually or daisy-chained together for extended coverage, and adjustable beam angles allow precise control of the illuminated area. Mounting height can also be customized to achieve the desired lighting effect.

System and Parts



How to Order

- Measure the length of the wall to determine quantity. (Plan for one WG Mini profile per meter).
- Choose the color for both the top and bottom lights.
- Specify either 12V or 24V LEDs for the bottom light.



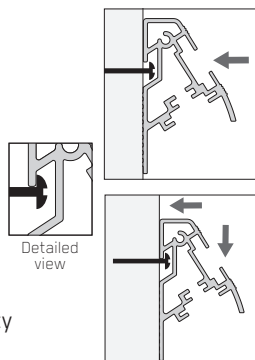
Available Light Tape® Colors



- No glare, completely uniform light with no heat.
- 4 1/4 watt per meter. 10% of LEDs at same brightness.
- Only 3 milliamps of current per linear meter step.

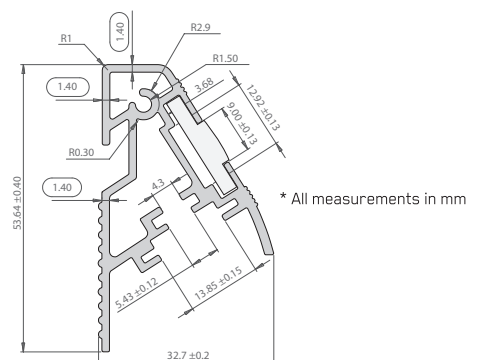
Rapid Installation

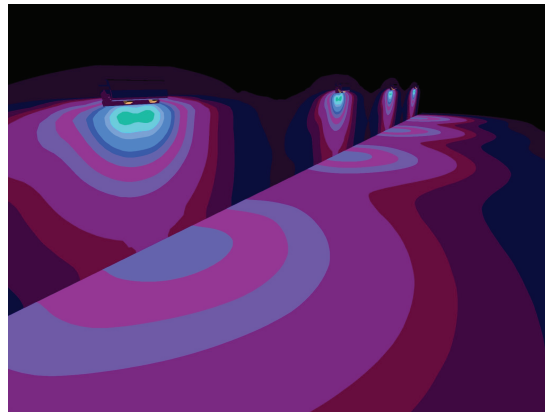
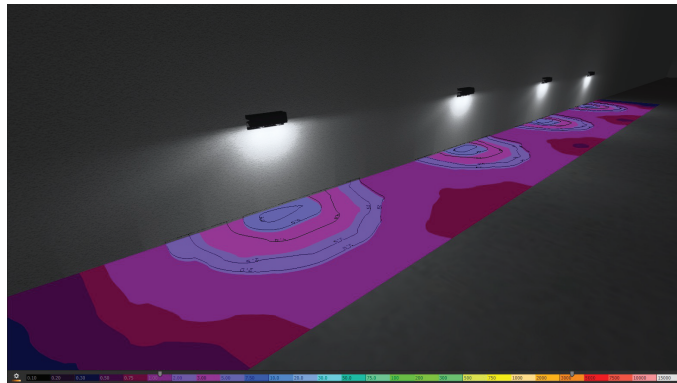
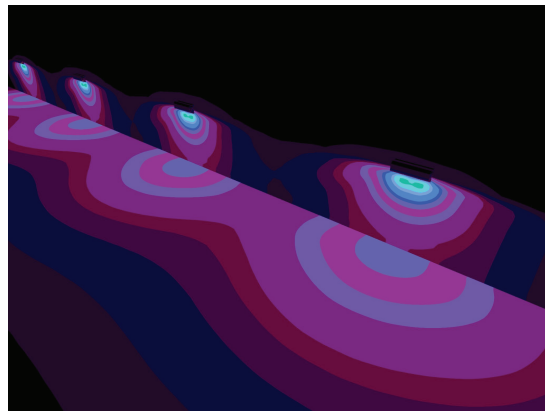
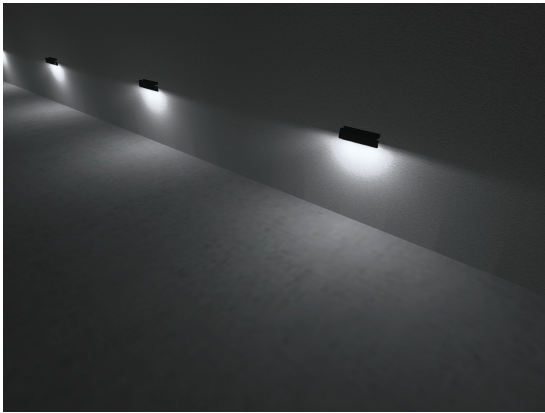
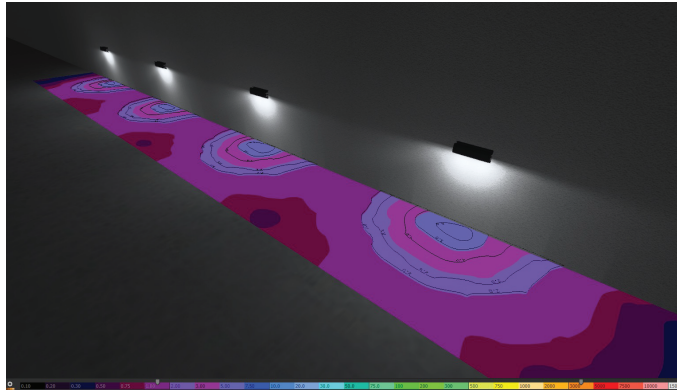
- Set length of the run, then mark and drill holes 30 cm from floor, at least 1 meter apart.
- Leave at least 3-4mm of screw head sticking out of wall surface.
- Push in and pull down the profile to lock mounting cavity onto the screws.



For step-by-step instructions, please refer to our installation manual on our website.

General SG-MINI Dimensions





| Calculation surface 3 | | |
|--|---------|--------|
| | 2.11 fc | 4.39 |
| Calculation surface (Perpendicular illuminance) | | |
| | Actual | Target |
| Average | 2.11 fc | - |
| Min | 0.48 fc | - |
| Max | 6.76 fc | - |
| Mean/Min | 4.39 | - |
| Max/Min | 14.07 | - |
| Parameter | | |
| Height | 0.000 m | |

